

CURRENT REPERTOIRE



What are YOU doing in August?

**Come to Cape Ann
Massachusetts...**

**ETHICS in
Professional Practice Conference**
Endicott College Campus, Beverly MA



INSIDE THIS EDITION

A MESSAGE FROM BOARD MEMBER
RON ALLEN 2

HISTORIANS' CORNER - The
Connection Between Your PJs &
the History of Behavior Analysis 4

MEANINGFUL DIFFERENCES 6

Our Events During ABAI'S
47th Annual Convention 7

WAYS YOU CAN HELP 14

Check out photos on p. 10-11
of our 14th Annual Conference on
Autism & Related Disorders:
Research-Based Solutions



CONFERENCE DATES

Friday, August 6

9th Annual Ethics in Professional
Practice Conference

Saturday, August 7

Annual Meeting of the Trustees 2021
following our Ethics Conference in MA
Stay tuned for more details!

August 17-19

Behavioral Safety Now is now part of
Safety in Action - DEKRA

Friday, November 12

3rd Behavioral Science: Applications
in Leadership & Supervision
Conference

Message from our Board: Dr. Ronald Allen

Pandemic Palliatives During a Dark Year



What follows is my response to the unasked question “How did you spend the Pandemic?” Like all of us, I watched in a deepening depression as the Covid case numbers and death count rose over the past year. I was stunned and angry at the intentional ignorance of the deniers and never-maskers, all supported by an inept and self-focused government. I found myself zoom-fatigued and unproductive. But the floods may be receding; we have a new government and, along with half the country, I am vaccinated. Now I can look back to ask what pulled me through the dark year.

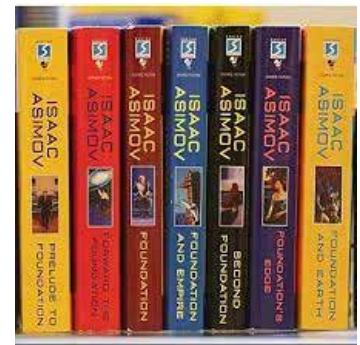
Certainly, my wife and my son. But they too were drowning in the dark year. Fundamental to my perseverance was

my program of palliative reading. As I have done during past crises I returned first to my roots, Skinner’s *Walden Two* and Asimov’s *Foundation Series*. *Walden Two* was the book that brought me to Behavior Analysis (and Behaviorism) back in 1973, to the Behavior Analysis program of the University of Florida in 1974, and ultimately to the Cambridge Center in the mid-80’s. Every time I read *Walden Two* I am inspired anew.

I’ve always found the *Foundation Series* (all seven novels) inspirational, as well. In a sci-fi future a galactic empire of worlds is crumbling under its own weight. A social scientist invents Psychohistory, a mathematical model predicting human behavior allowing the formation of the Foundation, a repository of knowledge and center for social scientists mitigating the chaos of the Empire’s demise (my own brief summary). In my more grandiose moments, I see the Cambridge Center as a Behavioral Foundation, an existential organization, and a hedge against future chaos. I guess that makes Rob a Psychohistorian. With that in mind I want to close with a few discriminative stimuli.

[On April 30 we held our 14th Annual Autism](#)

[Conference online](#) through the efforts of Dr. Adrienne Fitzer and ABAC. [August 6 will be the 9th Annual Ethics Conference offered online or on the Endicott College campus in Beverly, Massachusetts.](#) (Details available later in the news.) And, of course, it’s all about me. In October please join my **free** ABACLive Cambridge Center Series webinar entitled *Adjunctive Behavior and the Dynamics of Excess* (not science fiction).



Ron

Ronald Allen, PhD, BCBA-D
Associate Professor of Practice &
Doctoral Program Director
Simmons University
CCBS Board of Directors

Behavior Development Solutions - Silver Sponsor



Since 1998 [Behavior Development Solutions \(BDS\)](#) has helped several thousand behavior analysts become Board certified, primarily through their CBA Learning Module Series, the premier exam prep and curriculum

supplement for behavior analysts in training. They’ve helped clients achieve success by applying the scientific principles and methods of applied behavior analysis to the development of instructional content and software. More specifically, [BDS](#) uses goals and specific measurable objectives to teach the discriminations necessary to ensure that those objectives are learned. They then provide plenty of practice to ensure fluency and maintenance. BDS also provides 40-Hour training and exam prep courses for individuals seeking to become

Registered Behavior Technicians. In addition, a variety of on-demand and webinar CE courses are available, including an 8-hour supervisory training course, and a well-stocked bookstore for behavior analysts!”

Although the primary customer-base of [Behavior Development Solutions](#) has been behavior analysts, they also provide customized online training to other human service organizations and private companies. [If you have training needs, please get in touch. BDS may be able to help.](#)

Meet One of our Newer Trustees



Justin Leaf, PhD, BCBA-D, is the Co-Director of Research and Director of Training for Autism Partnership Foundation and Professor at Endicott College. Justin received his doctorate degree in Behavioral Psychology

from the Department of Applied Behavioral Science at the University of Kansas. Currently, Justin leads the research team at Autism Partnership Foundation, which conducts research nationally and internationally. His research interests include examining methods to improve social behaviors for children and adolescents with autism and developing friendships, comparing different teaching methodologies, evaluating parameters of reinforcement, and evaluating long term outcomes for individuals diagnosed with autism. Justin has over 100 publications in either peer reviewed journals, books, or book chapters and has presented at both national and international professional

conferences and invited events. Justin also recently edited a book entitled *Handbook of Social Skills and Autism Spectrum Disorder: Assessment, Curricula, and Intervention*, and have co-authored two books entitled *Clinical Judgment* and *The Autism Partnership Method: Social Skills Groups*. Justin is an Associate Editor for *Review Journal of Autism and Developmental Disorders*. Justin also serves or has served on the editorial board for the *Journal of Applied Behavior Analysis, Education and Training in Autism and Developmental Disabilities*, and the *Journal of Autism and Developmental Disorders*.

Distinguished Scholar Highlight



Abigail Blackman, MS, BCBA

Abigail Blackman is a doctoral student in the Performance Management Laboratory at the University of Kansas. After receiving her bachelor's degree in Psychology from Binghamton University, she went on to pursue her master's degree in Applied Behavior Analysis and Organizational Behavior Management at Florida Institute of Technology. During her graduate training she has gained experience consulting with a local human service agency and conducting translational and applied research. Presently, she is interested in determining training and supervision practices that impact employee retention and the influence of contextual variables on trained behavior.

Anderson Center for Autism - Silver Sponsor

[Anderson Center for Autism's \(ACA\)](#) mission is to optimize the quality of life for individuals with autism. Located in the beautiful Hudson Valley Region, two hours north of New York City, ACA provides residential and educational programs to students ages 5-21 with a diagnosis on the autism spectrum. At [Anderson Center for Autism](#), our evidence-based methods demonstrate realistic, steady progress and consistently make a difference in

the lives of the individuals and families we serve. Based on the principles of Applied Behavior Analysis (ABA), our treatment approach focuses on techniques and interventions that use positive reinforcement to teach our individuals the skills they need to strive for independence and reach their full potential. Our professional team administers ABA programs that comprehensively address each individual's educational, emotional and social needs in a proactive, positive manner. We understand that autism dramatically affects the lives of all who face it. For families, the autism community and public organizations, Anderson Center is uniquely qualified to serve as a valuable,



compassionate resource by providing education, support, and outreach services, and information aimed at delivering assistance and increasing overall autism awareness.

Learn more through: <https://www.andersoncenterforautism.org>





HISTORIANS' CORNER

The Connection Between Your PJs and the History of Behavior Analysis

By Andy Lattal, Board of Directors

my students was looking for an unusual venue for her campus wedding, I suggested my lab. She

The next time you put on your PJs, or maybe a blouse or shirt, you very well could be making contact with a relative of one of the most important pieces of apparatus in the history of behavior analysis. If your apparel item has a little protruding nub on one side of the clothing item that snaps (literally with that same sound) into a metal receptacle sewn to the other side of the item (Figure 1, top photograph), then you indeed have made contact. A very similar snap connector could, until the 1990s (but for some of us, still can) be found in virtually every behavior analysis laboratory in the world. These snaps (Figure 2) were located on either end of a length of wire that enabled an electrical connection between the two items thus connected. A snap-on connector is an ancient idea, but its modern iteration is credited to British button manufacturer Benjamin Sanders. It was the Newey Company of Birmingham, England, established in 1798, however, that improved the design and made them popular among clothing manufacturers in the 19th century.

During the Victorian era (1800s), snap connectors from the same company were used to secure carpets to the floors of homes (Figure 1, middle photograph). Still later, in the 20th century, a Scotsman, James d'Argaville Clark, got the bright idea to use them as a means of connecting batteries to the devices they were to power (Figure 1, bottom photograph). The snap connectors were a faster and more flexible connection

than either soldering the wires to the device or attaching the wires with screws. At some point around the Second World War, the U. S. Army Signal Corps found use for these connectors as a means of quickly setting up communications equipment. A signalman-soldier named Norman Guttman (Figure 3) found himself after his military service as a graduate student of B. F. Skinner's at Indiana University. When looking for a better way to connect the electrical modules that controlled Skinner's experiments, Guttman introduced Skinner to the snap connector, giving rise to the earliest use of snap leads in the experimental analysis of behavior. (Guttman is well known for his research on stimulus generalization.) From there, snaps and snap leads proliferated and became an essential component of the programming equipment-early versions of digital computers – which were used to build programs that controlled operant conditioning experiments (an example of their use appears in Figure 4). Because the snap leads were easily moved from one module to another, quickly altering contingencies to follow interesting observations, they contributed significantly to the practice of the inductive method so strongly advocated by Skinner.

Across my long tenure at West Virginia University, I have found other uses for the noble snap lead besides patching together the ancient apparatus I use to control my experiments. When, some time back, one of



Figure 1. Three historic functions of snaps. Top: beginning in the early 19th century, for holding clothes together. Middle: in the 19th century, carpet holders. Bottom: in the 20th century, electrical connectors.



Figure 2. In the lower right, a pair of snap connectors, labeled Nu-Way. These connectors could be soldered to a length of wire to create the snap lead shown in the center of the photograph.

and her spouse-to-be jumped on the idea. So, there it was held. The lovely bride topped her wedding trousseau with a Tierra made of, yep, snap leads.

For many years, a seasonal tree that graced our lab during the month of December was decorated with brightly colored snap leads and topped with a likeness of B. F. Skinner, crafted by one of my graduate students.

Finally, the student achieving the highest point accumulation each year in my graduate Experimental Analysis of Behavior course is

inducted into the exclusive and highly secret “Order of the Green Snap Lead.” Each inductee receives, of course, a well-used green snap lead, suitable for wearing around one’s neck or framing for one’s trophy wall. A singular honor indeed.

For a more complete history of the snap lead, see Escobar, R., & Lattal, K. A. (2014). Nu Way snaps and snap leads: An important connection



Figure 3. Norman Guttman, the man credited by Skinner with introducing the snap connector to behavior analysis.

in the history of behavior analysis. *The Behavior Analyst*, 37, 95-107.

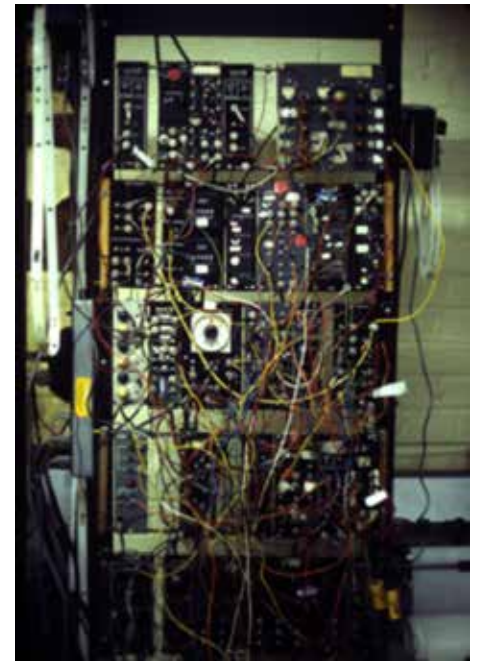


Figure 4. A relay rack with programming modules connected to one another by snap leads (the colored wires) to create a program controlling an operant conditioning experiment.

Familiar Faces in New Places

Trustee Lori Diener-Ludwig Moves to Performance Ally



Dr. Lori Diener-Ludwig is known as a world-class expert in behavioral systems design because of her unique ability to help organizations manage complexity and execute their strategy with Organizational Behavior Management (OBM) solutions. She is the Chief Human Performance Engineer and a co-founder of Performance Ally, an organization whose mission is to create happy, high-performing workplaces with their app, Ally Assist, a real-time performance management enterprise solution. Her leadership in developing this app is indicative of her longtime efforts to mainstream the science of OBM in ways that

help companies harness the tremendous power of human performance.

Prior to joining Performance Ally, Lori spent 20+ years working across numerous industries such as automotive, human services, medical diagnostics, non-profit, oil and gas, and print in companies of all sizes, from global Fortune 500s, creative start-ups, non-profits to local small businesses. The scope of her projects ranged from designing large scale performance-based learning strategies and programs for global clients to leading non-profit and small-business leaders in the development of strategic plans, impact metrics dashboards, and core strategies. She has transformed dozens of organizations by helping them build their value and grow their revenue, gain new strategic partnerships, develop compelling marketing messaging, increase collaboration, and focus on the execution of strategic plans.

Lori is also the founder of Performance Blueprints, an organization whose mission is to disseminate the science and practice of Behavior Systems Analysis to optimize the impact of organizations.

Performance Blueprints nudges the science forward through numerous peer-reviewed publications, edited books, research, conference presentations, book chapters, and professional activities within the University of North Carolina and Western Michigan University systems, the Association for Behavior Analysis International, Cambridge Center for Behavioral Studies, Organizational Behavior Management Network, and the Journal of Organizational Behavior Management. In 2014, Performance Blueprints was honored to receive the Geary Rummler Award for the Advancement of Performance Improvement from the International Society for Performance Improvement.

Lori earned her B.S. in Psychology and Creative Writing, M.S. in Industrial Organizational Psychology and Ph.D. in Applied Behavior Analysis from Western Michigan University. She currently serves as a Trustee of the Cambridge Center for Behavioral Studies, President for the Organizational Behavior Management Network, and a Board Member of Blue Ridge Women in Agriculture.

Increase the Impact of Your Gift!

Reduce Your Tax Burden & Give More to Support Us



Photo by Alec Favale on Unsplash

When you make a gift of stock investments, you can reduce your tax burden and give more to support the Cambridge Center.

The following benefits are available to you as a donor:

You can save on your next tax return. When you give a stock donation, you will receive a charitable tax deduction, often for the full fair market value of your gift.

You can avoid capital gains tax. When you gift your appreciated stocks

instead of selling them, you do not have to pay the capital gains.

You may also avoid paying extra taxes, like healthcare taxes, on any net investment income.

You will not affect your cash flow by giving an asset.

You may be able to give a much larger gift since you are saving so much on taxes.

More details about how this can benefit you are outlined in the ["Tax-smart charitable giving strategies" article at https://investornews.vanguard/tax-smart-charitable-giving-strategies/](https://investornews.vanguard/tax-smart-charitable-giving-strategies/).

It is very easy.

There are three ways you can give stocks.

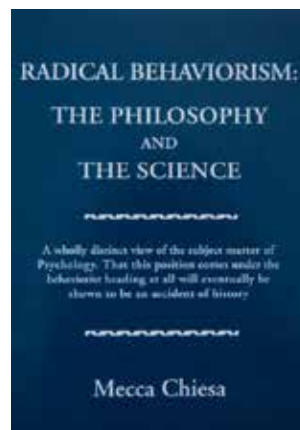
1. You can give the appreciate stocks directly. **Contact [Tara Kasey, CCBS Business Manager](#), to receive a document that outlines the simple steps you need to take to transfer the stock directly.**
2. You can set up a donor-advised fund (DAF). This is a little bit more involved but will give you more flexibility as your stock donation does not have to be done at the same time as when you give to CCBS. This allows you to distribute a larger gift to CCBS over time.
3. You can give through a foundation.

The first option is the easiest to facilitate. The other two options have some additional benefits but will require a separate account through a financial institution. [Please contact us today if you would like to give a gift that helps your money to go further.](#)



Business Manager
Tara Kasey

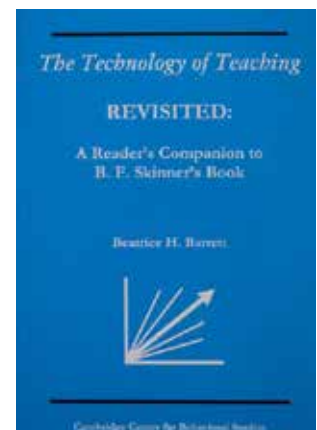
CCBS HAS EBOOKS AVAILABLE - SAVE \$\$\$



\$19



\$19



\$16

Thanks to our Business Manager, Tara Kasey! Watch for future announcements of more conversions.

Join the Center During ABAI's 47th Annual Convention



**Pre-convention workshops:
Thursday, May 27 – Friday, May 28**

**Convention:
Friday, May 28 – Monday, May 31**

**The 2021 annual convention has been
moved to a fully online event.**

Memorial for the Life & Work of David Dwight Harshbarger Sunday, May 30 (6:00 - 6:50 pm EDT)



Join the Cambridge Center's esteemed panel with Chair Tim Ludwig, Hank Pennypacker, Andy Lattal and Mark Alavosius during the online 47th Annual Convention of the Association for Behavior Analysis International in memorial for Dwight Harshbarger, past Executive Director of the Center.

Dwight wrote of “sliding doors” in his autobiography in CCBS’ Behavioral Science: Tales of Inspiration and Service as discrete moments when opportunities arise that send one’s life in a different trajectory. Whether we knew him or not, we are all the beneficiaries of Dwight’s work and relationships as sliding doors in our careers and outreach. For many of us this includes the development of what came to be Behavioral Safety Now, for others it was an invitation to impact humanity through his work as Executive Director for the Cambridge Center for Behavioral Studies, and still others it was the founding (along with Bill Hopkins) the Commission on Behavioral Safety Accreditation. His

scholarship includes seminal works in Behavioral Systems, his professional career included executive positions with Sealy and Reebok, and his many historical fiction novels remind us of the externalities of our corporate actions. His mission to apply the science of behavior analysis to reduce human suffering in all its forms will remain a central tenet of our field. Celebrate Dwight’s life and legacy. [Panel #324A, Sunday, May 30, 6:00-6:50 pm \(Online\)](#)

Reunion with the The Chicago School of Professional Psychology & the B. F. Skinner Foundation - Sunday, May 30 (8:00 - 10:00 pm EDT)

This event provides an opportunity for all ABAI attendees involved with or interested in the B. F. Skinner Foundation, the Cambridge Center for Behavioral Studies, and The Chicago School of Professional Psychology (TCS) ABA departments in Chicago, Southern California, Washington, DC, Dallas, and Online to get together, get updates on activities, and make plans for the future. This event is a great time to meet a diverse group of behavior analysts - from students to seasoned faculty to well-known researchers in the field. All ABAI attendees are invited to network, discuss common interests, and have an all-around good time! [\(Reunion #344\)](#)



Meaningful Differences

"Meaningful Differences" is a new, recurring newsletter section where CCBS Directors and Trustees recommend an article, chapter, or book that had a meaningful impact on them. And now, hopefully an impact on you. Thanks Directors Andy Bondy and Janet Twyman for the idea. If you have a recommendation for "Meaningful Differences," [contact the Center](#). Read on for our inaugural entry from Janet.



Member, Board of Directors
Janet Twyman, PhD

It might be surprising that some of my absolute favorite behavior analytic readings are from a little gem of a book: "Recent Issues in the Analysis of Behavior." I strongly recommend the book to anyone interested in the breadth and depth of behavior analysis, and especially those who want to read B. F. Skinner's own words about a myriad issues that are still contemporary today.

Readings from that book have made a "Meaningful Difference" on me. I'll mention two: "The Place of Feelings in the Analysis of Behavior" (first published in 1987 as "Outlining a Science of Feeling" in the London Times Literary Supplement) and its companion reading, "The Origins of Cognitive Thought." As a emerging behavior analyst (one thrilled with the potential of a behavior/operant account of thoughts, feelings, communication—yet one who still wanted the science to be tied to real world experiences) I was enthralled with these two little chapters. They engendered several revelations: Of course, our verbal behavior evolved to tact our physical events! Of course our natural language represents this all the time! Yes, word entomology can be seen as the archeology for thoughts and feelings. Examples from these chapters became my go-to instances and descriptions of why behavior analysis made sense. And I'm happy to admit that those examples and the underlying concepts and

principles, still serve me to this day. The words we use tact our condition and many other things. All we need to do is listen and observe.

Recent Issues can be found at many "out-of-print" online bookstores – or perhaps even your favorite used book store. [To whet your appetite, you can read "The Origins of Cognitive Thought" linked here thanks to Appalachian State University.](#)

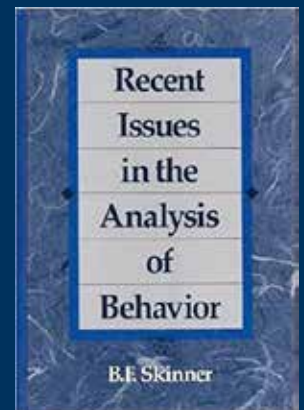
Sources:

Skinner, B.F. (1987, May). Outlining a science of feeling. *The Times Literary Supplement*, pp. 490, 501-502.

Skinner, B.F. (1989). *Recent issues in the analysis of behavior*. Columbus, OH: Merrill.

Skinner, B.F. (1989). The origins of cognitive thought. *American Psychologist*, 44, 13-18.

[You may also purchase *Recent Issues in the Analysis of Behavior* through Amazon. The Center will benefit.](#)



Recommended Journal Article

Bringing Behavior-Analytic Theory to Eco-driving Research: Verbal Rules Mediate the Effectiveness of Feedback for Professional and Civilian Drivers



Trustee Mark Alavosius



Advisor Donny Newsome

Mechanisms providing feedback to drivers about fuel economy are becoming standard equipment in new vehicles but vary considerably in their design. Similar dashboards are available to homeowners to track energy use and athletes to manage training. Samples of individuals' verbal behavior (rules about how to drive efficiently) were collected in the context of two eco-driving feedback interventions—one with commercial fleet drivers and one with civilian drivers. Analyses revealed that the rate at which drivers generated novel verbal rules (per week) accounted for a substantial proportion of the variability **in relative** efficiency gains across participants. Fleet drivers improved fuel efficiency by 9.8% on average; civilian drivers showed mixed results. Findings support the utility of behavior-analytic conceptual tools in investigation of environmentally friendly behavior and how to organize improvements.

The basic distinction between contingency-shaped and rule-governed behaviors and the elaboration of direct-acting and indirect-acting contingencies inform the design of effective feedback streams.

[Newsome, D., Sanguinetti, A. & Alavosius, M.P. Bringing Behavior-Analytic Theory to Eco-driving Research: Verbal Rules Mediate the Effectiveness of Feedback for Professional and Civilian Drivers. Behav. Soc. Iss. \(2021\). <https://doi.org/10.1007/s42822-020-00045-9>](#)

Melmark - Silver Sponsor

Melmark is a multi-state human service provider with premier private special education schools, professional development, training, and research centers in Pennsylvania, Massachusetts and the Carolinas. The not-for-profit organization provides

clinically-sophisticated evidence-based special education, residential, vocational and therapeutic services for children and adults diagnosed with autism spectrum disorders, developmental and intellectual disabilities, acquired brain injuries, medical complexities, and other neurological and genetic disorders. Melmark's applied behavior analytic programs are offered in the least restrictive environment possible.

Melmark is committed to providing exceptional applied behavior analytic services to every individual, every day. With a vision to expand



and raise the quality of service delivery systems throughout the country by disseminating and replicating the Melmark Model of Program Development and Clinical Treatment, Melmark embraces the following core commitments: Compassionate Care, Integrity in Everything We Do, Highly Skilled Workforce, Evidence-Based Practices, and Best Outcomes.

To learn more, visit www.melmark.org.

Dr. Salvador “Sal” Ruiz Presents in May

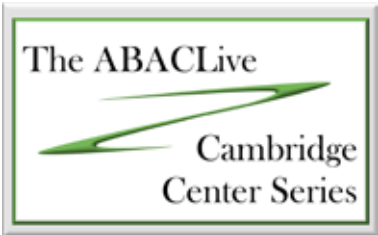
Join our international community on Friday, May 14 (11 an-2 pm Eastern)

Precision Solutions for the Treatment of Problem Behavior

REGISTER



Behavior Assessments are a common practice in the treatment of problem behavior in schools, clinics, and home settings. Specifically, Descriptive Assessment is utilized to identify antecedent and consequences that maintain challenging behavior. However, issues with analysis can occur during data collection. Precision Teaching is a measurement system that when paired with Descriptive Assessment can create a practical approach to data collection, decision making, and development of effective treatment.



“Helping Those Who Help Others, One Live Webinar at a Time” Our [ABACLive Cambridge Center Series](#) is offered for **FREE** or at a discounted registration fee to earn BACB® Learning CEs plus other continuing education opportunities.

Visit our Flagship Journal - *Behavior and Philosophy*



Trustee & Author
John Staddon, PhD

Theoretical Behaviorism

Abstract: B. F. Skinner's *radical behaviorism* has been highly successful experimentally, revealing new phenomena with new methods. But Skinner's dismissal of theory limited its development. Theoretical behaviorism recognizes that a historical system, an organism, has a state as well as sensitivity to stimuli and the ability to emit responses. Indeed, Skinner himself acknowledged the possibility of what he called “latent” responses in humans, even though he neglected to extend this idea to rats and pigeons. Latent responses constitute a *repertoire*, from which operant reinforcement can select. The paper describes some applications of theoretical behaviorism to operant learning.

Download PDF. Go to our Current Volumes - available for free on behavior.org.

Dr. Staddon also contributed his ‘Superstition’ chapter to our [Behavioral Science: Tales of Inspiration, Discovery, and Service – Omnibus Edition](#) - one of our 29 inspirational author chapters.

Faces of our 14th Annual Conference on Autism & Related Disorders: Research-Based Solutions



Rob Holdsambeck



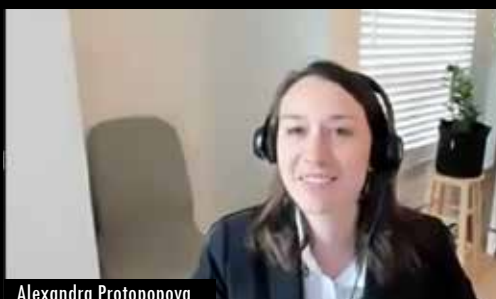
Eric Larsson



Alice Shillingsburg



Lori Frost



Alexandra Protopopova



Kerri Milyko



Abigail Blackman



Robert Pennington



Amanda Laprime



Sarah Kent



Sal Ruiz



Alyssa McElroy

**Cheers to
Rob Holdsambeck
Executive Director
for our 14th
successful Autism conference!**

Reaching 8 countries including United Arab Emirates, Australia, Bermuda, Brazil, Canada, Great Britain, Luxembourg plus 30 US States!



Just a few of the 247 people registered to attend the conference...



SAVE THE DATE for our 15th Annual Conference on
Autism & Related Disorders: Research-Based Solutions
Friday, April 29, 2022 - Solvang, California. Come to Wine Country!

Cambridge Center for Behavioral Studies™ in cooperation with Endicott College is proud to present

9th Annual

ETHICS

in Professional Practice

Friday, August 6, 2021

8:30 am ~ 5:00 pm

Endicott College Campus or
Remote Access

Beverly, Massachusetts

www.behavior.org

We are planning a **HYBRID EVENT**

A smaller in-person gathering with
electronic options.

[Watch for news on our event listing on behavior.org](http://www.behavior.org)

Behavior Analysts • Psychologists • Parents • Teachers • Special Education Providers

A one-day live online conference features leaders in the fields of
Psychology, Business, Autism & Applied Behavior Analysis.

Invited Speakers



Andy Bondy, PhD

President & Co-Founder
Pyramid Educational Consultants (PECS)
Vice Chair Board of Directors
Cambridge Center for Behavioral Studies



Nasiah Cirincione-Ulezi, EdD, BCBA

CEO & Founder, ULEZI, LLC
CEO & Co-Founder, Pivot 2 Inclusion, LLC



Brian Connors, PhD, BCBA

BRIAN CONNORS, BCBA, LLC
Speaker, Consultant, Author



Susan G. Friedman, PhD

Professor Emeritus, Department of Psychology
Utah State University
Founder, Behavior Works



Gerald P. Koocher, PhD, ABPP

Senior Associate in Psychology
Boston Children's Hospital
Senior Lecturer, Department of Psychiatry and Behavioral
Sciences & Faculty Member
Center for Bioethics, Harvard Medical School

Panel



Moderator

Mary Jane Weiss, PhD, BCBA-D, LABA

Director, Graduate Program in Autism/ABA Studies
Endicott College



Ksenia Gatzunis, PhD, BCBA-D

Adjunct Faculty, Endicott College & Northeastern University

Kimberly Edwards, MEd, National Certified Speech-Language Pathologist

Adriana Rodriguez, MA, BCBA, St. Lucie County Public Schools

3rd ANNUAL BEHAVIORAL SCIENCE: APPLICATIONS in

Leadership & Supervision

CONFERENCE

Friday, November 12, 2021



THE UNIVERSITY OF
KU KANSAS
Department of Applied Behavioral Science

A one-day conference featuring leaders in the field of Applied Behavior Analysis, Organizational Behavior Management, and Autism, to discuss critical issues in supervision important to Behavior Analysts (BCBA-Ds, BCBAs, BCaBAs & RBTs) and other professionals, such as psychologists, teachers, and special educators.

Invited Speakers



RAYMOND G. MILTENBERGER, PHD, BCBA-D

University of South Florida



LORI DIENER-LUDWIG, PHD

Performance Ally



TERRY MCSWEEN, PHD

DEKRA



AMBER VALENTINO, PSYD, BCBA-D

Trumpet Behavioral Health



TIMOTHY LUDWIG, PHD

Appalachian State University
Safety-Doc.com

Panel



Claudia L. Dozier, PhD, BCBA-D
Pamela L. Neidert, PhD, BCBA-D
Jomella Watson-Thompson, PhD

University of Kansas
Department of Applied Behavioral Science

Introduction by



Rob Holdsambeck, EdD, LCP, BCBA-D

Cambridge Center for Behavioral Studies
Holdsambeck Behavioral Health

Thank You to Our Continuing Education Partners



LR: Leasha M. Barry, PhD, BCBA-D, LBA; Dayna L. Beddick, EdS, BCBA; Michelle Lambert, MA, BCBA; Jerry Charvat; Sal Ruiz, PhD, BCBA; & Sarah Kent, MA, BCBA



LR: Andy Bondy, PhD; Rayna Bondy, MSW; & Lori A. Frost, MS, CCC/SLP



Michael Weinberg, PhD, LP, BCBA-D

Adrienne Fitzer, PhD, LP, BCBA

OUR TRUSTEES

Mark Alavosius, PhD
Ronald F. Allen, PhD*
Paul Andronis, PhD
Erik Arntzen, PhD
Judah B. Axe, PhD
Leasha M. Barry, PhD
Carl Binder, PhD
Andy Bondy, PhD*
Darrel Bostow, PhD
José E. Burgos, PhD
Robyn M. Catagnus, EdD
Joseph Dagen, PhD
Ronnie Detrich, PhD
Michael F. Dorsey, PhD
Eitan Eldar, PhD
Stephen Eversole, EdD*
Edward Feeney,
Hua Margarate Feng, PhD
Lanny Fields, PhD
Richard Foxx, PhD
Patrick C. Friman, PhD

***Board of Directors Members**

R. Wayne Fuqua, PhD
Peter F. Gerhardt, EdD
Celia Wolk Gershenson, PhD
Nicole Gravina, PhD
Angelica C. Grindle, PhD
Gregory Hanley, PhD
D. Dwight Harshbarger, PhD
William L. Heward, EdD
Philip Hine, PhD*
Rob Holdsambeck, EdD
Ramona Houtman, PhD
Kent Johnson, PhD
Mickey Keenan, DPhil
Jeff Kupfer, PhD
Amanda P. Laprime, PhD
A. Darnell Lattal, PhD*
Kennon (Andy) Lattal, PhD*
T. V. Joe Layng, PhD
Justin Leaf, PhD
Marta León, PhD
Lori Ludwig, PhD
Timothy D. Ludwig, PhD*
Russell W. Maguire, PhD
M. Jackson Marr, PhD
Tetsuro Matsuzawa, PhD

Thomas C. Mawhinney, PhD
Terry McSween, PhD
Francis Mechner, PhD
Paolo Moderato, PhD
Edward K. Morris, PhD
James Mulick, PhD
Martha Pelaez, PhD
Robert Pennington, PhD
Henry S. Pennypacker, PhD*
Francisco I. Perez, PhD
Chuck Pettinger, PhD
Ruth Anne Rehfeldt, PhD
Marius M. Rietdijk, PhD
Jesús Rosales-Ruiz, PhD
Claire St. Peter, PhD
Henry Schlinger, PhD
Julie M. Smith, PhD
J.E.R. Staddon, PhD
Kenneth Stephens, PhD
Janet Twyman, PhD*
Karen R. Wagner, PhD
Michael Weinberg, PhD
Mary Jane Weiss, PhD
Oliver Wirth, PhD
Thomas L. Zane, PhD*

Most of our work is through the voluntary efforts of our directors, trustees, and advisors. These individuals represent the best experts in behavioral science and practice. [Find out "Who We Are" on behavior.org.](#)

**GIVE
TODAY**

DONATE

Your generosity brings the best of behavioral science to the public.



AMAZON SMILE

Choose the Cambridge Center for Behavioral Studies™ as your charity on Amazon Smile! Remember, always start at smile.amazon.com Amazon will donate .5% of the price of your eligible AmazonSmile purchases. <https://smile.amazon.com>



GIVING ASSISTANT

Giving Assistant shoppers earn cash back, and donate a percentage of that cash back to organizations like us! Just sign up for free to start earning and giving. You'll also enjoy huge savings at 3,000+ popular retailers like Sears and Target, as well as limited-time offers including exclusive Lowe's coupons! It's never been easier to change the world.

SOCIAL MEDIA

Join and follow us on
[Facebook](#) and [LinkedIn](#).



on behavior.org

The Cambridge Center is a non-profit 501 (c) 3 organization whose mission is to advance the scientific study of behavior and its humane application to the solution of practical problems, including the prevention and relief of human suffering.

Telephone contact: (978) 369-2227
E-mail contact: center@behavior.org
Address: 410 Newtown Road, Littleton, MA 01460